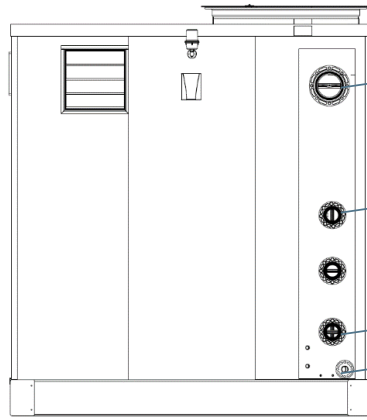
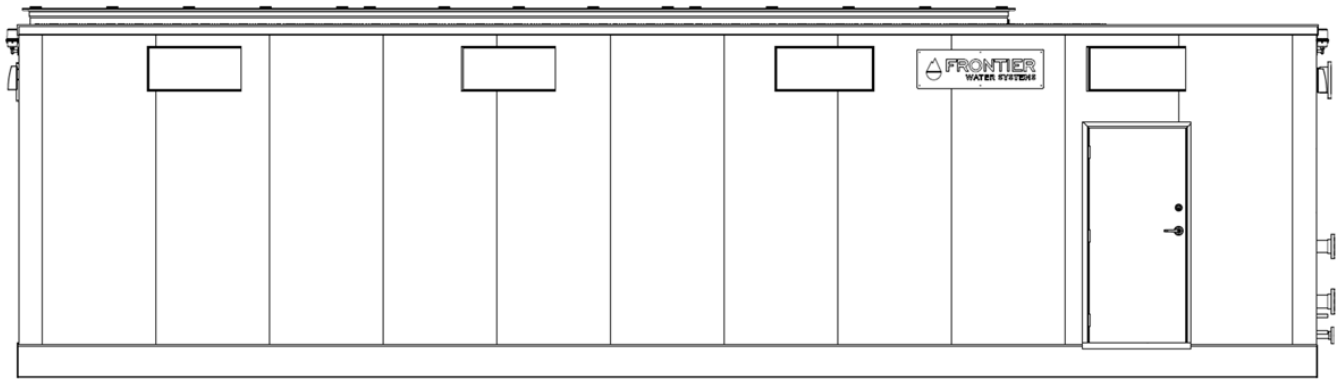


SeHAWK™ TREATMENT MODULE DATA



8" Waste

4" Feed

4" Treated Water

2" Drain and Misc. Chemical Lines

FEATURES



Networked PLC



Automated Process



Combined Treatment of Selenium Nitrate and Metals in a single process



Cold Weather Operation



SeHAWK™ 250 Example Specs

Power Requirements	3 phase, 460 v, 60 hz, 60 amp
Length	40'
Width	10'
Height	12'
Shipping Weight	40,000 lbs
Hydraulic Capacity	250 gpm
Operating Ambient Temperature Range	-20° F to 120° F
Operating Feedwater Temperature Range	-32° F to 100° F

Headquarters
3442 Sutherland Street
San Diego, CA 92110

www.frontierwater.com

Rocky Mountain Operations
8 East Broadway
Salt Lake City, UT 84111

